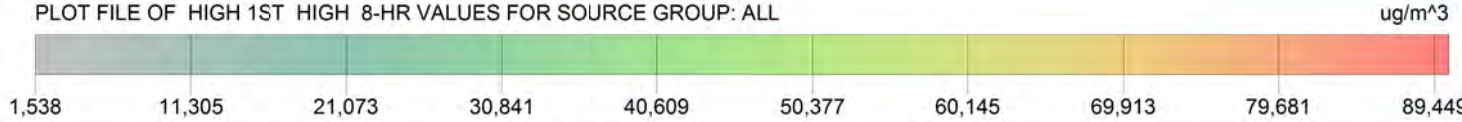




PROJECT TITLE:

Anglies monoksidas (CO)  
8 valandų vidurkio koncentracijos įvertinus foninę taršą



PLOT FILE OF HIGH 1ST HIGH 8-HR VALUES FOR SOURCE GROUP: ALL

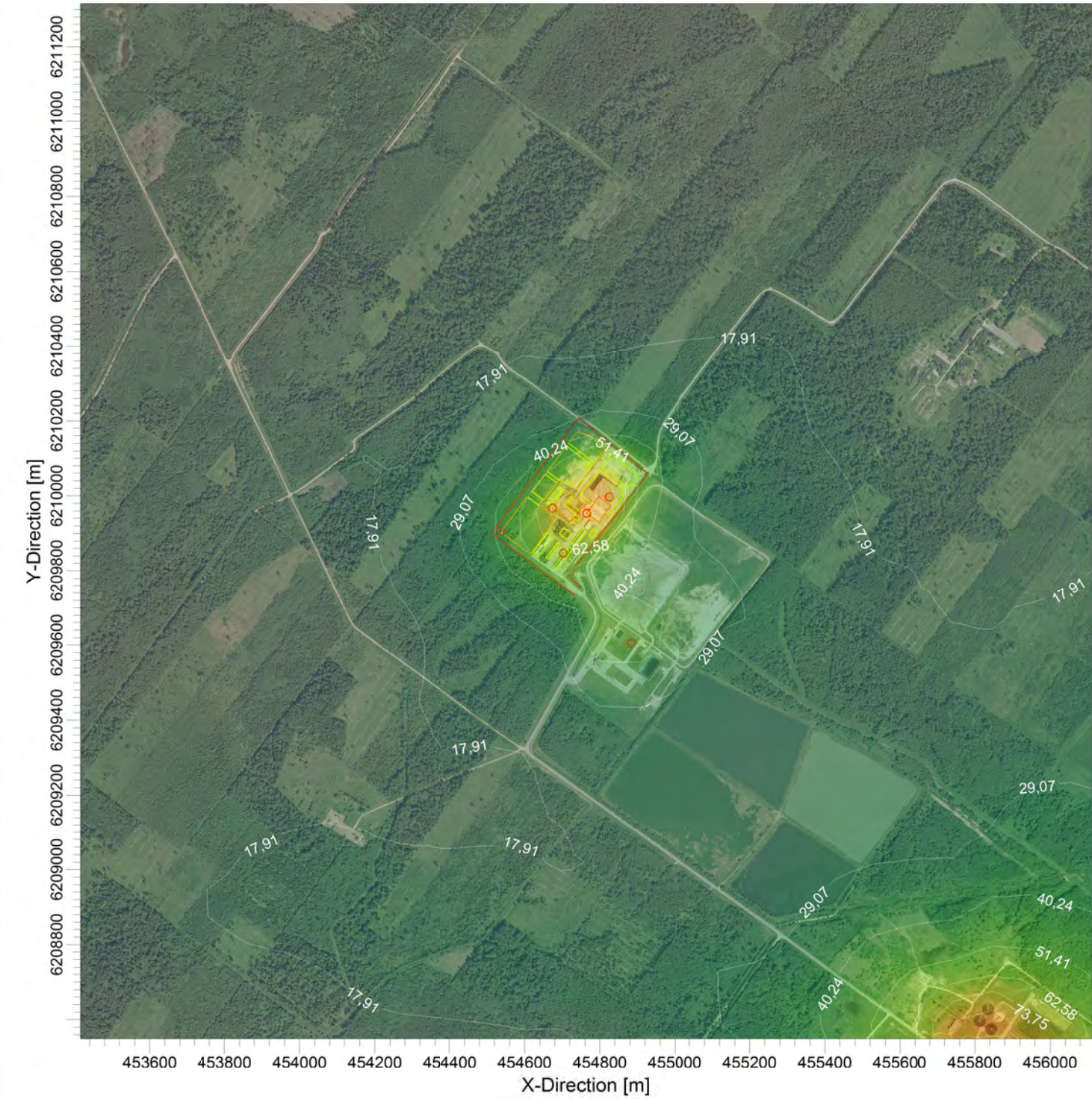


COMMENTS:  Ribinė vertė - 10000 ug/m3	SOURCES:  11	COMPANY NAME:		
	RECEPTORS:  1600	MODELER:		
	OUTPUT TYPE:  Concentration	SCALE: 1:15.000  0  0,5 km		
	MAX:  89,44894 ug/m^3	PROJECT NO.:		



PROJECT TITLE:

Azoto dioksidas (NO2)  
Vienos valandos koncentracijos įvertinus foninę taršą

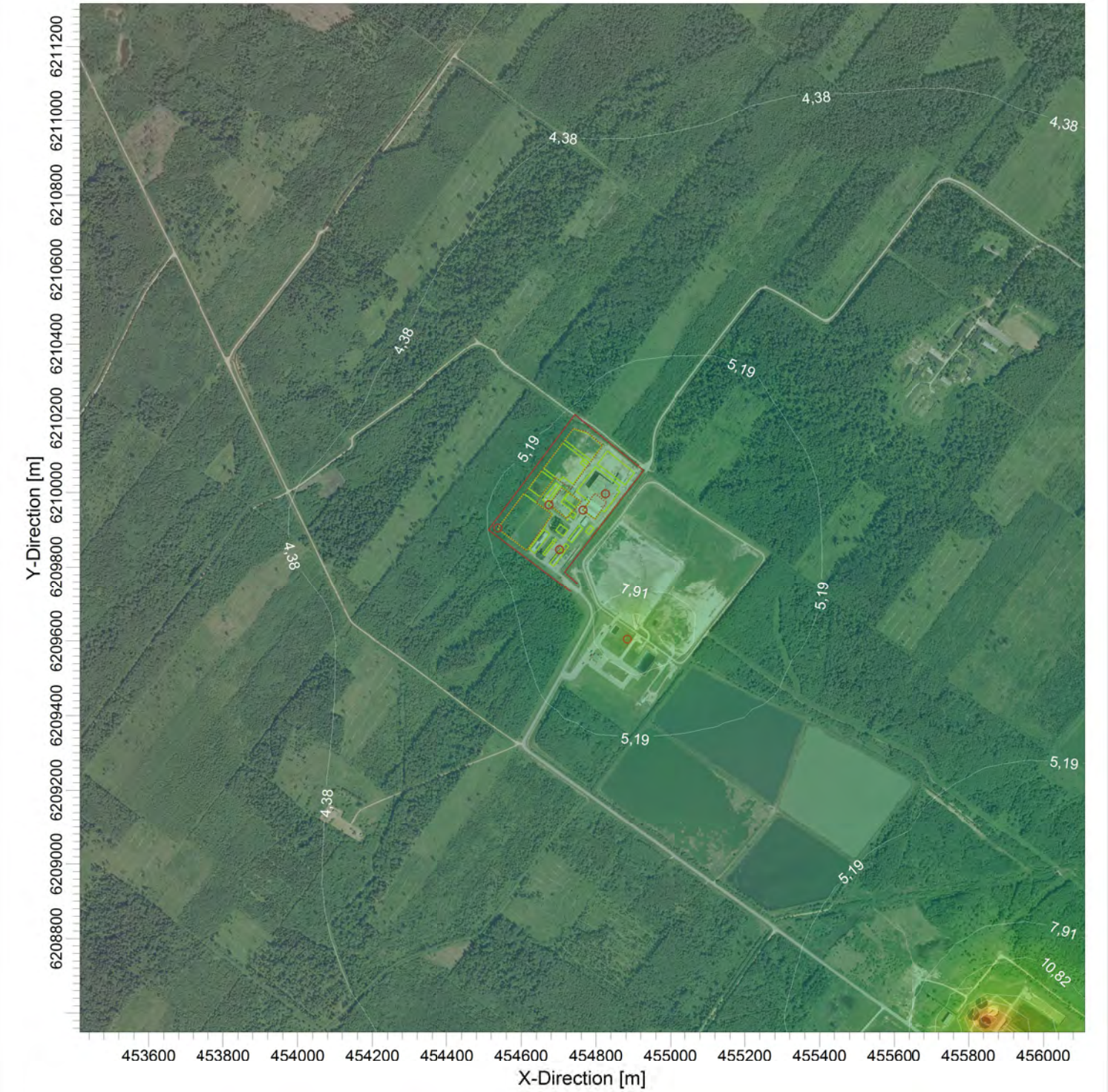


PLOT FILE OF 99.80TH PERCENTILE 1-HR VALUES FOR SOURCE GROUP: ALL ug/m^3




COMMENTS:  Ribinė vertė - 200 ug/m3	SOURCES:  11	COMPANY NAME:	
	RECEPTORS:  1600	MODELER:	
	OUTPUT TYPE:  Concentration	SCALE:  0 0,5 km	1:15.000
	MAX:  107,2537 ug/m^3	PROJECT NO.:	






PLOT FILE OF ANNUAL VALUES FOR SOURCE GROUP: ALL ug/m^3



COMMENTS:  Ribinė vertė - 40 ug/m3	SOURCES:  <b>11</b>	COMPANY NAME:	
	RECEPTORS:  <b>1600</b>	MODELER:	
	OUTPUT TYPE:  <b>Concentration</b>	SCALE:  1:15.000  0  0,5 km	
	MAX:  <b>30,3075 ug/m^3</b>	PROJECT NO.:	



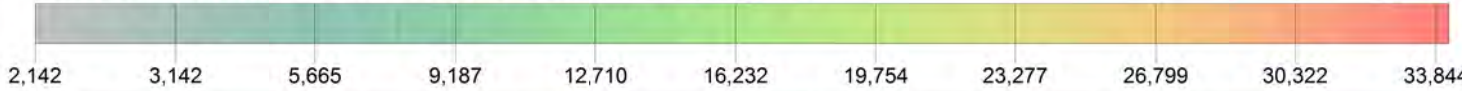


COMMENTS:  Ribinė vertė - 125 ug/m3	SOURCES:  8	COMPANY NAME:	
	RECEPTORS:  1600	MODELER:	
	OUTPUT TYPE:  Concentration	SCALE:  1:15.000  0  0,5 km	
	MAX:  24,9606 ug/m^3	PROJECT NO.:	





PLOT FILE OF 99.70TH PERCENTILE 1-HR VALUES FOR SOURCE GROUP: ALL ug/m^3



COMMENTS:  Ribinė vertė - 350 ug/m3	SOURCES:  8	COMPANY NAME:	
	RECEPTORS:  1600	MODELER:	
	OUTPUT TYPE:  Concentration	SCALE:  1:15.000 0 0,5 km	
	MAX:  33,844 ug/m^3	PROJECT NO.:	





COMMENTS:  Ribinė vertė - 50 ug/m3	SOURCES:  6	COMPANY NAME:	
	RECEPTORS:  1600	MODELER:	
	OUTPUT TYPE:  Concentration	SCALE:  1:15.000 0 0,5 km	PROJECT NO.:
	MAX:  13,994 ug/m^3		

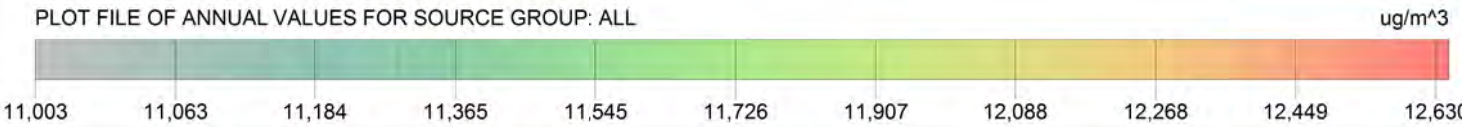



PROJECT TITLE:

Kietosios dalelės (KD10)  
Metų vidurkio koncentracijos įvertinus foninę taršą



PLOT FILE OF ANNUAL VALUES FOR SOURCE GROUP: ALL

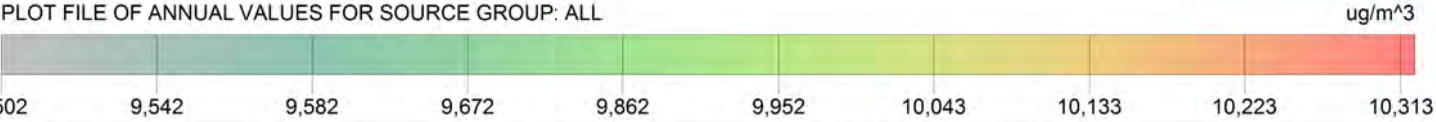


COMMENTS:  Ribinė vertė - 40 ug/m3	SOURCES:  <b>6</b>	COMPANY NAME:	
	RECEPTORS:  <b>1600</b>	MODELER:	
	OUTPUT TYPE:  <b>Concentration</b>	SCALE:	1:15.000
	MAX:  <b>12,6297 ug/m^3</b>	0  0,5 km	
		PROJECT NO.:	



PROJECT TITLE:

Kietosios dalelės (KD2,5)  
Metų vidurkio koncentracijos įvertinus foninę taršą

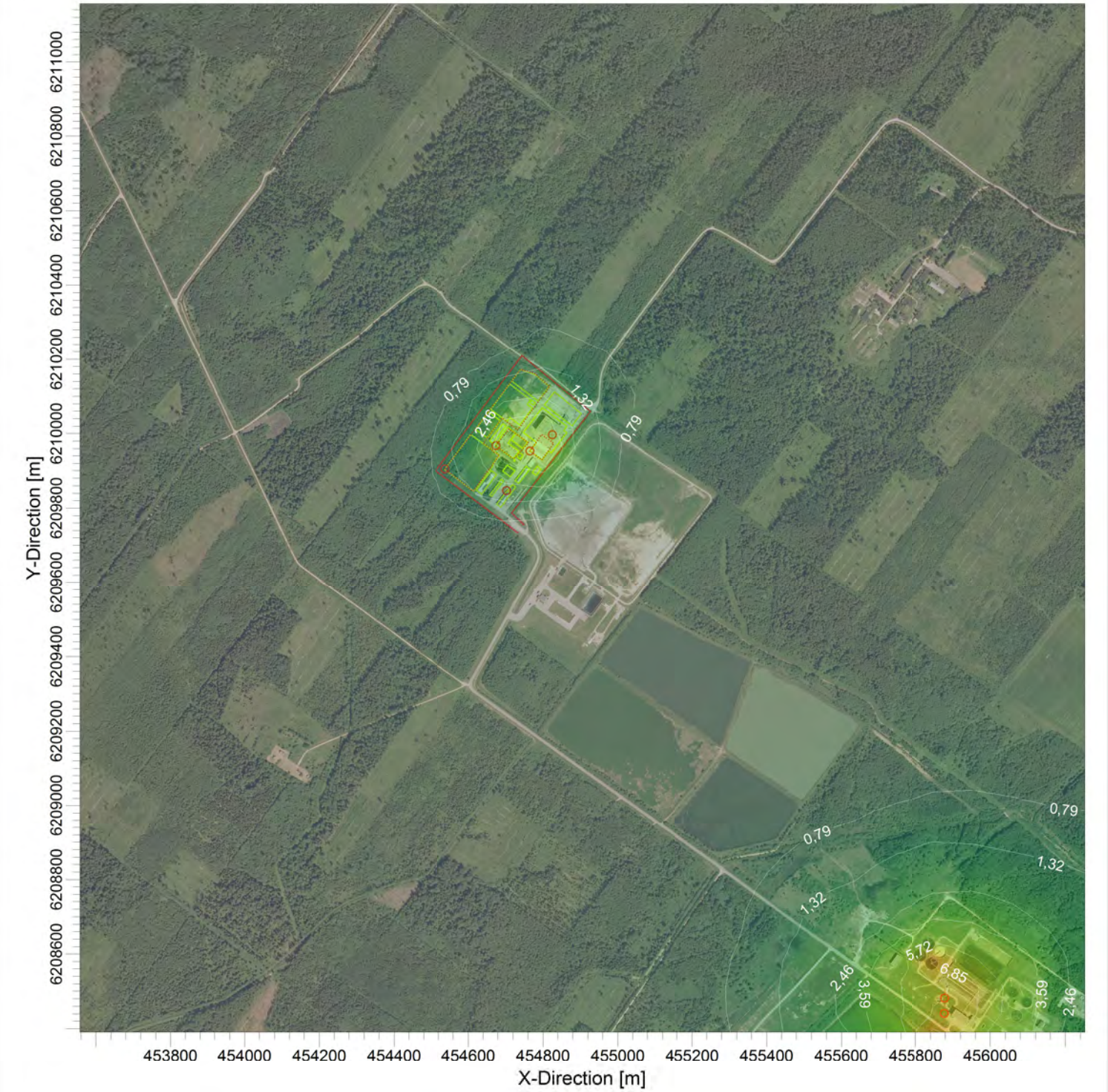


COMMENTS:  Ribinė vertė - 25 ug/m3	SOURCES:  <b>6</b>	COMPANY NAME:	
	RECEPTORS:  <b>1600</b>	MODELER:	
	OUTPUT TYPE:  <b>Concentration</b>	SCALE:  1:15.000  0 0,5 km	
	MAX:  <b>10,313 ug/m<sup>3</sup></b>	PROJECT NO.:	

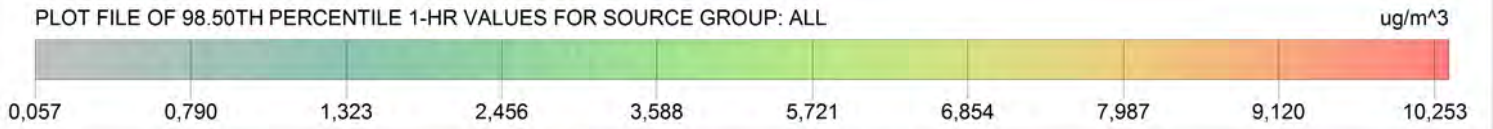



PROJECT TITLE:

Lakūs organiniai junginiai (LOJ)  
Vienos valandos vidurkio koncentracijos įvertinus foninę taršą



PLOT FILE OF 98.50TH PERCENTILE 1-HR VALUES FOR SOURCE GROUP: ALL

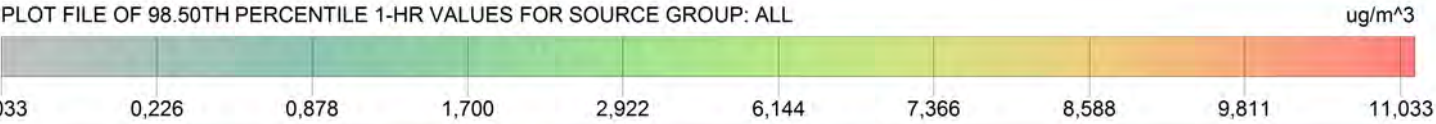


COMMENTS:  Ribinė vertė - 5000 ug/m3	SOURCES:  8	COMPANY NAME:	
	RECEPTORS:  1600	MODELER:	
	OUTPUT TYPE:  Concentration	SCALE:  1:15.000	
	MAX:  10,25252 ug/m^3	PROJECT NO.:	



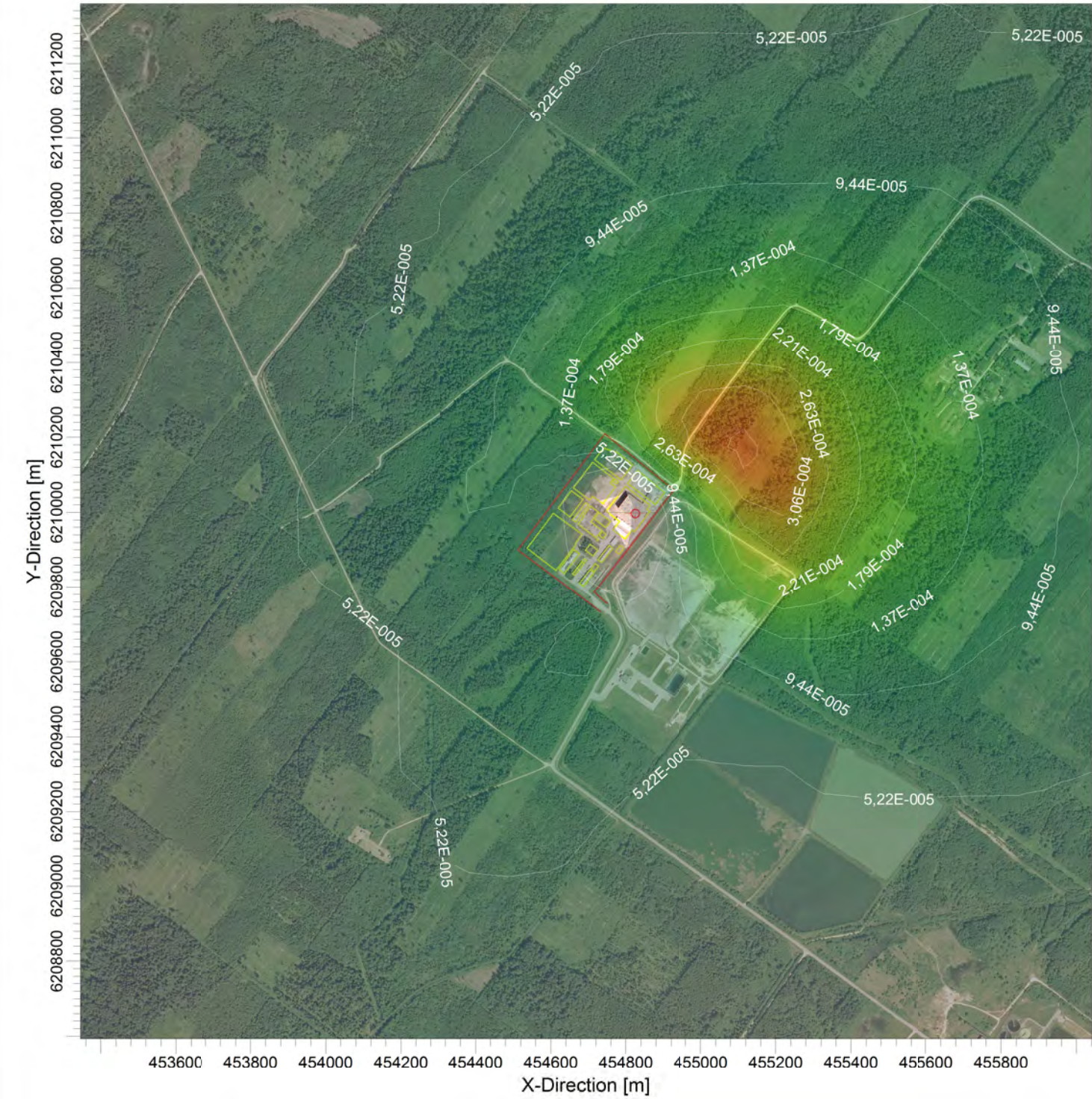
PROJECT TITLE:

Amoniakas  
Valandos vidurkio koncentracijos įvertinus foninę taršą



COMMENTS:  Ribinė vertė - 200 ug/m3	SOURCES:  2	COMPANY NAME:	
	RECEPTORS:  1600	MODELER:	
	OUTPUT TYPE:  Concentration	SCALE:  1:15.000  0 0,5 km	
	MAX:  11,03273 ug/m^3	PROJECT NO.:	






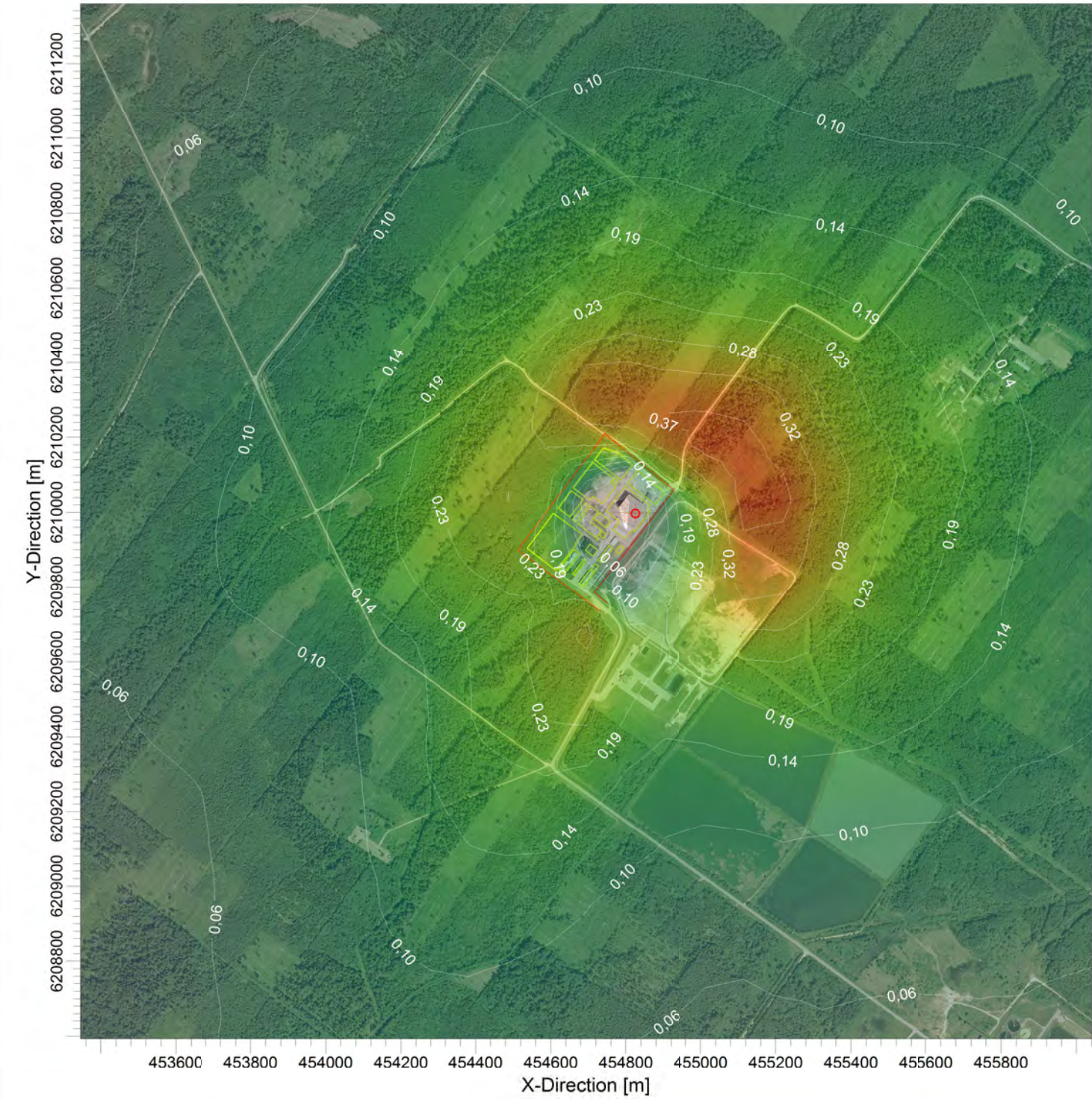
PLOT FILE OF ANNUAL VALUES FOR SOURCE GROUP: ALL

ug/m^3



COMMENTS:  Ribinė vertė - 6 ng/m3	SOURCES:  <b>1</b>	COMPANY NAME:	
	RECEPTORS:  <b>1600</b>	MODELER:	
	OUTPUT TYPE:  <b>Concentration</b>	SCALE:  <b>1:15.000</b>	PROJECT NO.:
	MAX:  <b>0,00039 ug/m^3</b>		





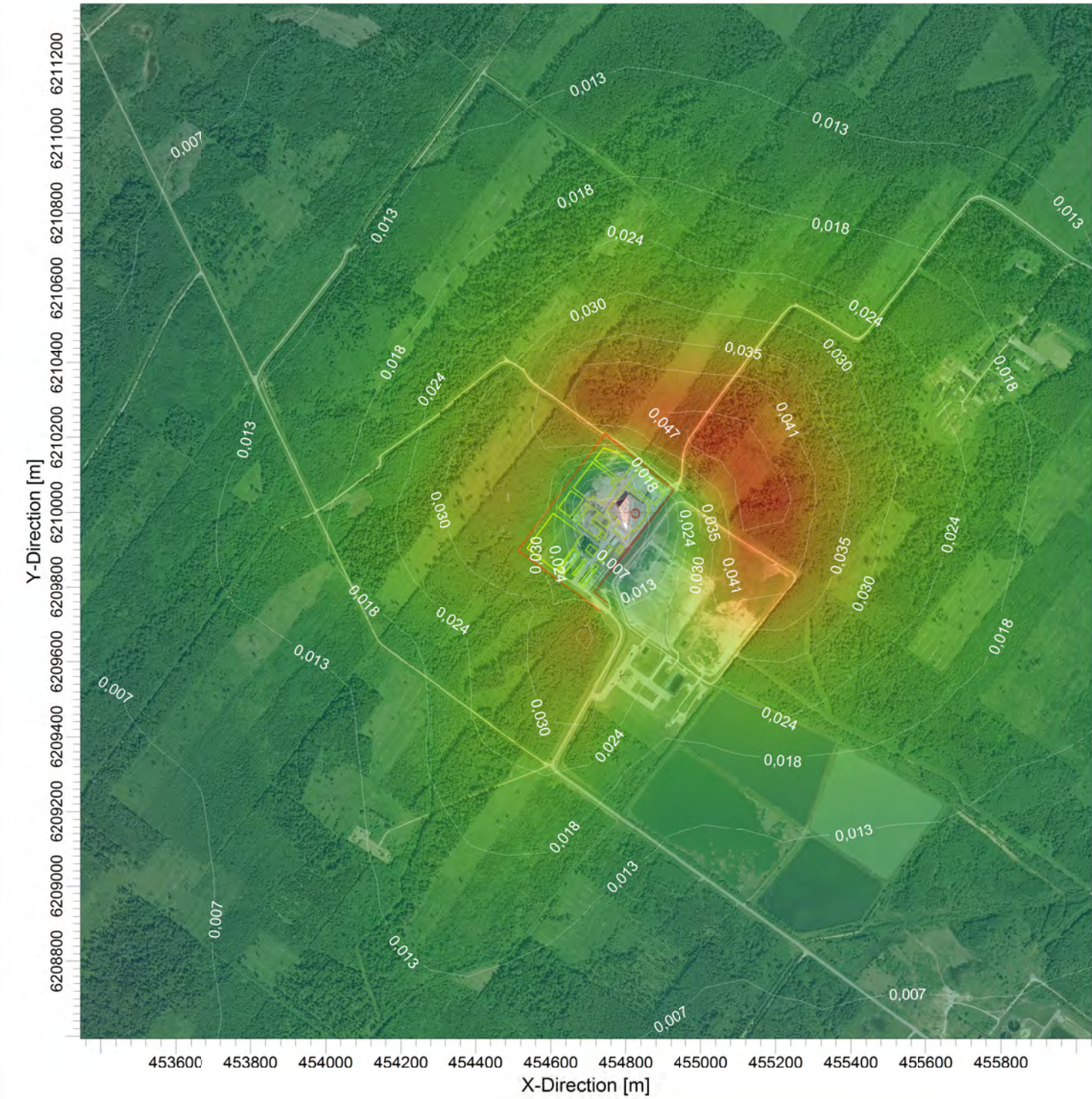
PLOT FILE OF 98.50TH PERCENTILE 1-HR VALUES FOR SOURCE GROUP: ALL

0.012 0.056 0.100 0.145 0.189 0.233 0.278 0.322 0.366 0.411

ug/m^3

COMMENTS:  Ribinė vertė - 200 ug/m3	SOURCES:  1	COMPANY NAME:	
	RECEPTORS:  1600	MODELER:	
	OUTPUT TYPE:  Concentration	SCALE:  1:15.000  0 0,5 km	
	MAX:  0,41052 ug/m^3		PROJECT NO.:





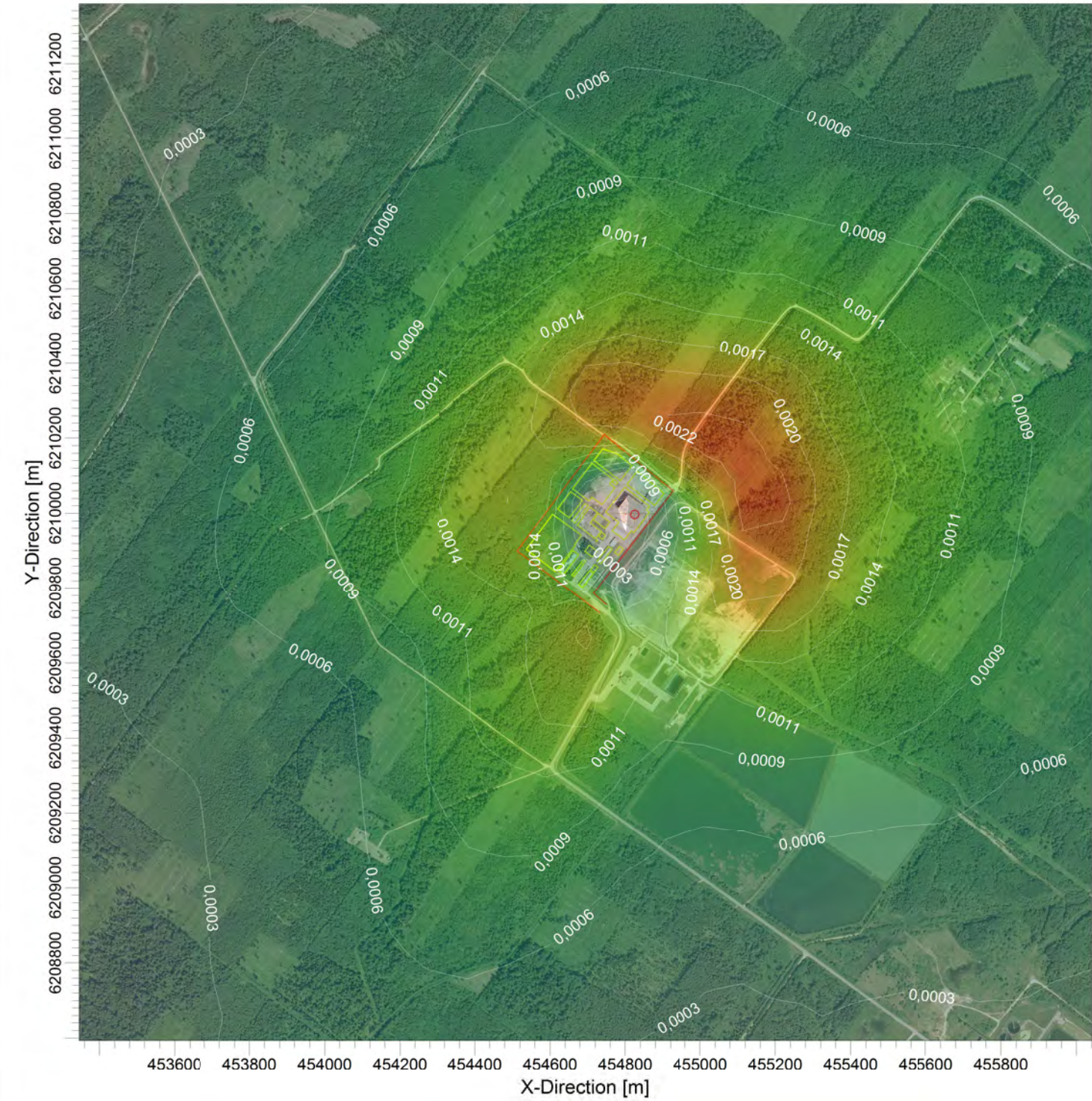
PLOT FILE OF 98.50TH PERCENTILE 1-HR VALUES FOR SOURCE GROUP: ALL

ug/m^3

0,0010,0020,0070,0130,0180,0240,0300,0350,0410,0470,052

COMMENTS:  Ribinė vertė - 20 ug/m3	SOURCES:  <b>1</b>	COMPANY NAME:	
	RECEPTORS:  <b>1600</b>	MODELER:	
	OUTPUT TYPE:  <b>Concentration</b>	SCALE:	1:15.000
	MAX:  <b>0,05225 ug/m^3</b>	PROJECT NO.:	
	00,5 km		





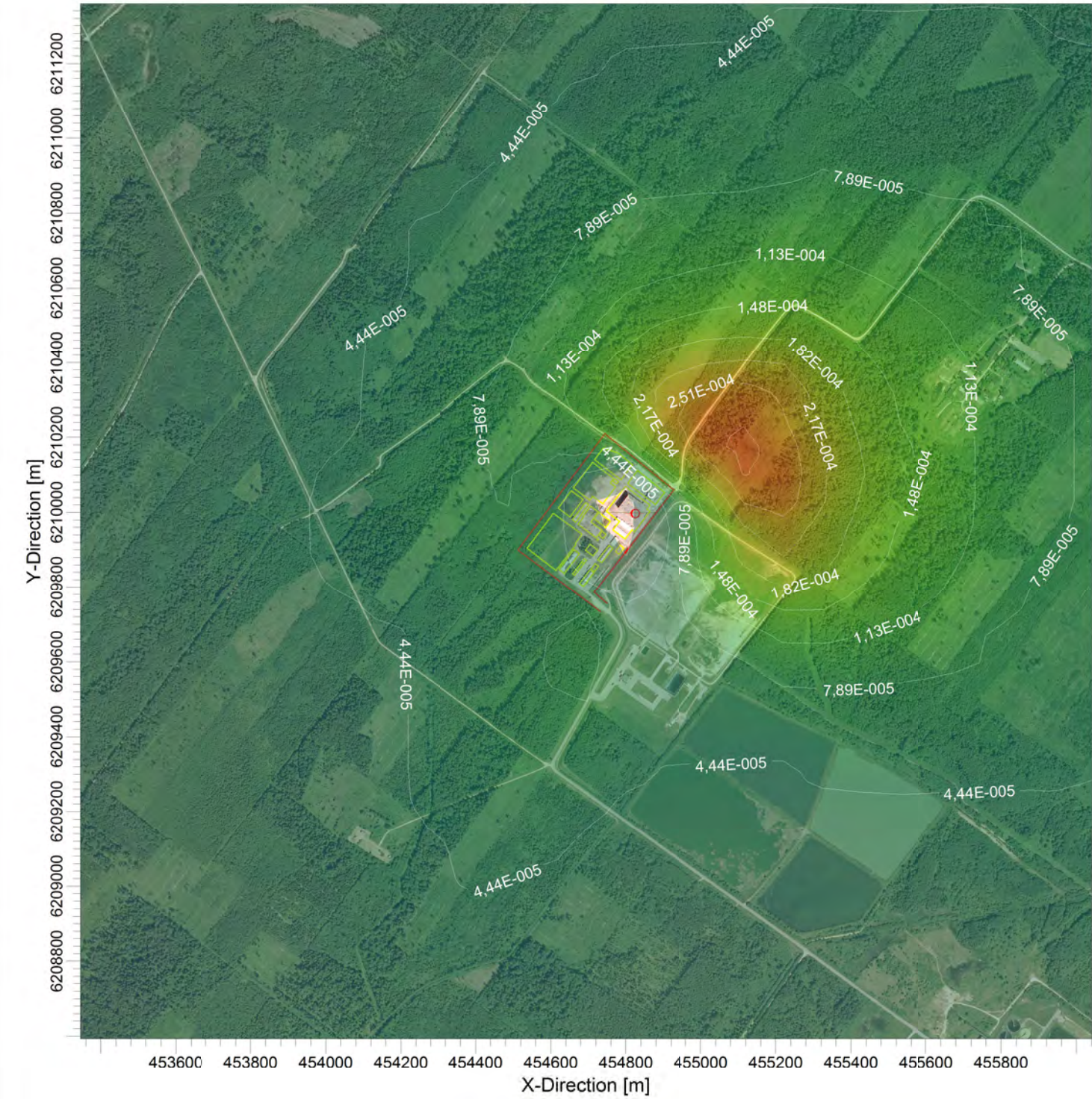
PLOT FILE OF 98.50TH PERCENTILE 1-HR VALUES FOR SOURCE GROUP: ALL ug/m^3



COMMENTS:  Ribinė vertė - 0,9 ug/m3	SOURCES:  <b>1</b>	COMPANY NAME:	
	RECEPTORS:  <b>1600</b>	MODELER:	
	OUTPUT TYPE:  <b>Concentration</b>	SCALE:	1:15.000
	MAX:  <b>0,00249 ug/m^3</b>	PROJECT NO.:	







COMMENTS:  Ribinė vertė - 5 ng/m3	SOURCES:  1	COMPANY NAME:	
	RECEPTORS:  1600	MODELER:	
	OUTPUT TYPE:  Concentration	SCALE:  1:15.000 0 0,5 km	PROJECT NO.:
	MAX:  0,00032 ug/m^3		