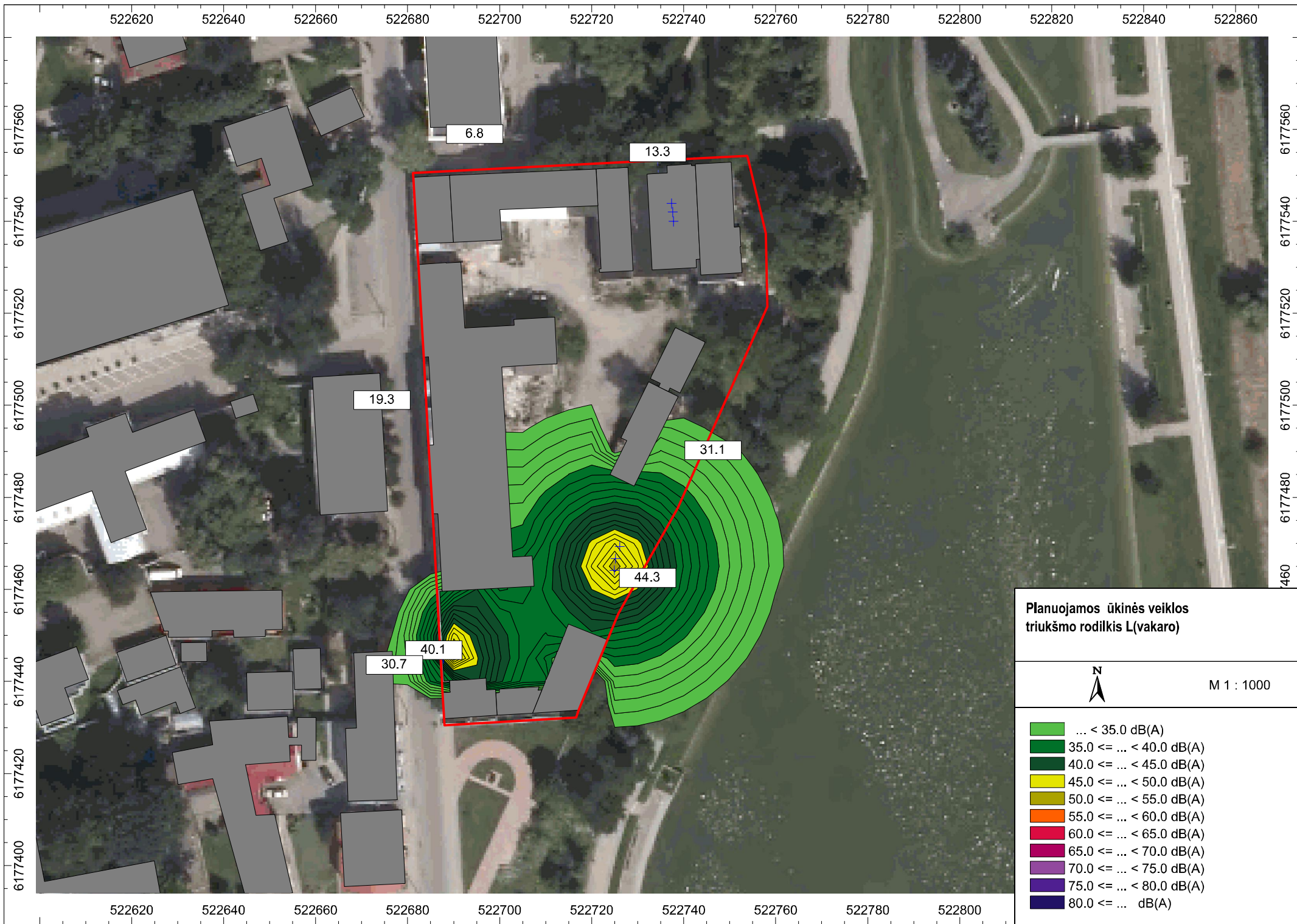


Planuojamos ūkinės veiklos triukšmo rodiklis L(dienos)



M 1 : 1000

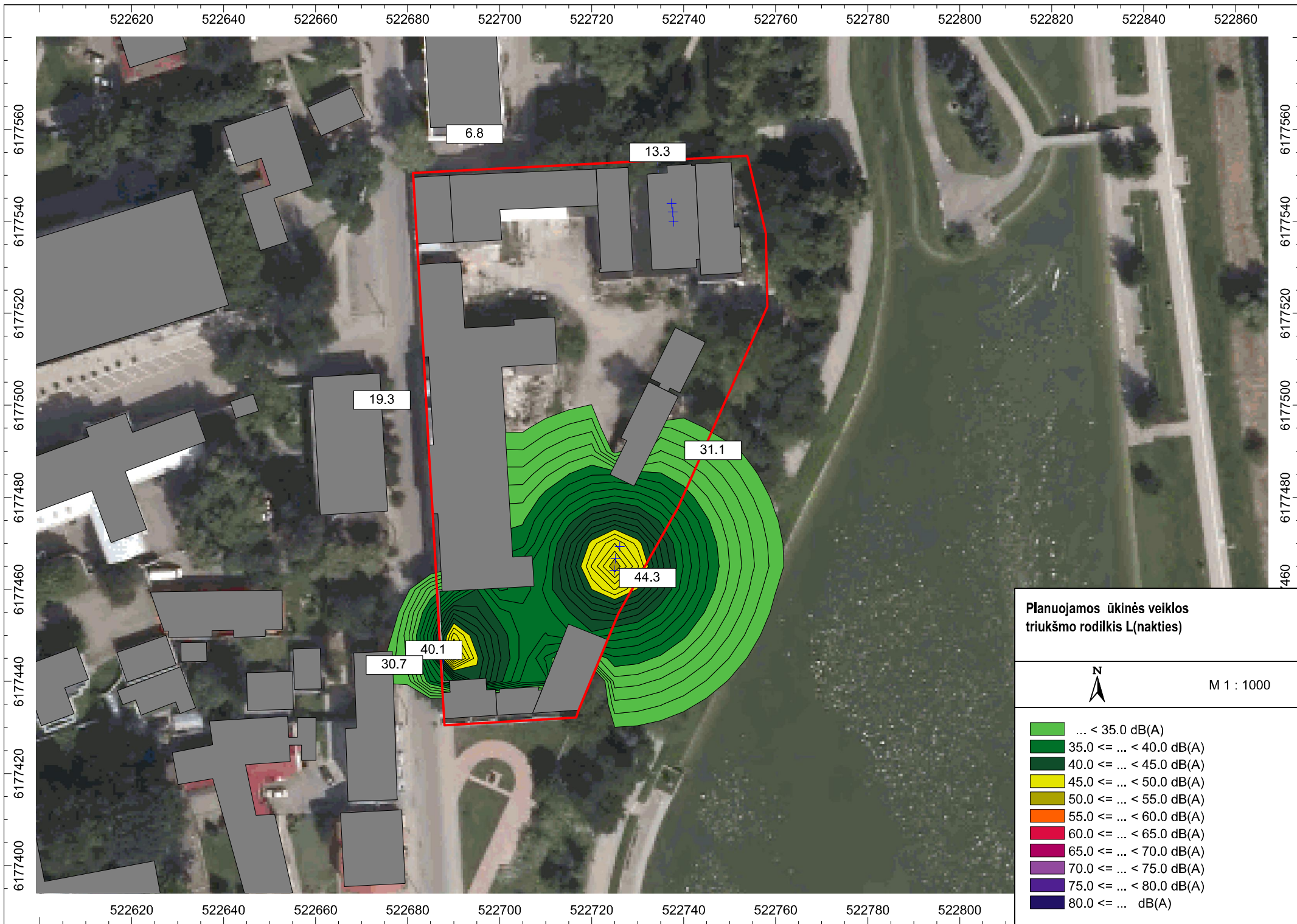
- ... < 35.0 dB(A)
- 35.0 <= ... < 40.0 dB(A)
- 40.0 <= ... < 45.0 dB(A)
- 45.0 <= ... < 50.0 dB(A)
- 50.0 <= ... < 55.0 dB(A)
- 55.0 <= ... < 60.0 dB(A)
- 60.0 <= ... < 65.0 dB(A)
- 65.0 <= ... < 70.0 dB(A)
- 70.0 <= ... < 75.0 dB(A)
- 75.0 <= ... < 80.0 dB(A)
- 80.0 <= ... dB(A)



Planuojamos ūkinės veiklos triukšmo rodiklis L(vakaro)

N
M 1 : 1000

	... < 35.0 dB(A)
	35.0 <= ... < 40.0 dB(A)
	40.0 <= ... < 45.0 dB(A)
	45.0 <= ... < 50.0 dB(A)
	50.0 <= ... < 55.0 dB(A)
	55.0 <= ... < 60.0 dB(A)
	60.0 <= ... < 65.0 dB(A)
	65.0 <= ... < 70.0 dB(A)
	70.0 <= ... < 75.0 dB(A)
	75.0 <= ... < 80.0 dB(A)
	80.0 <= ... dB(A)



Planuojamos ūkinės veiklos triukšmo rodiklis L(nakties)

N
M 1 : 1000

...	< 35.0 dB(A)
...	35.0 ≤ ... < 40.0 dB(A)
...	40.0 ≤ ... < 45.0 dB(A)
...	45.0 ≤ ... < 50.0 dB(A)
...	50.0 ≤ ... < 55.0 dB(A)
...	55.0 ≤ ... < 60.0 dB(A)
...	60.0 ≤ ... < 65.0 dB(A)
...	65.0 ≤ ... < 70.0 dB(A)
...	70.0 ≤ ... < 75.0 dB(A)
...	75.0 ≤ ... < 80.0 dB(A)
...	80.0 ≤ ... dB(A)