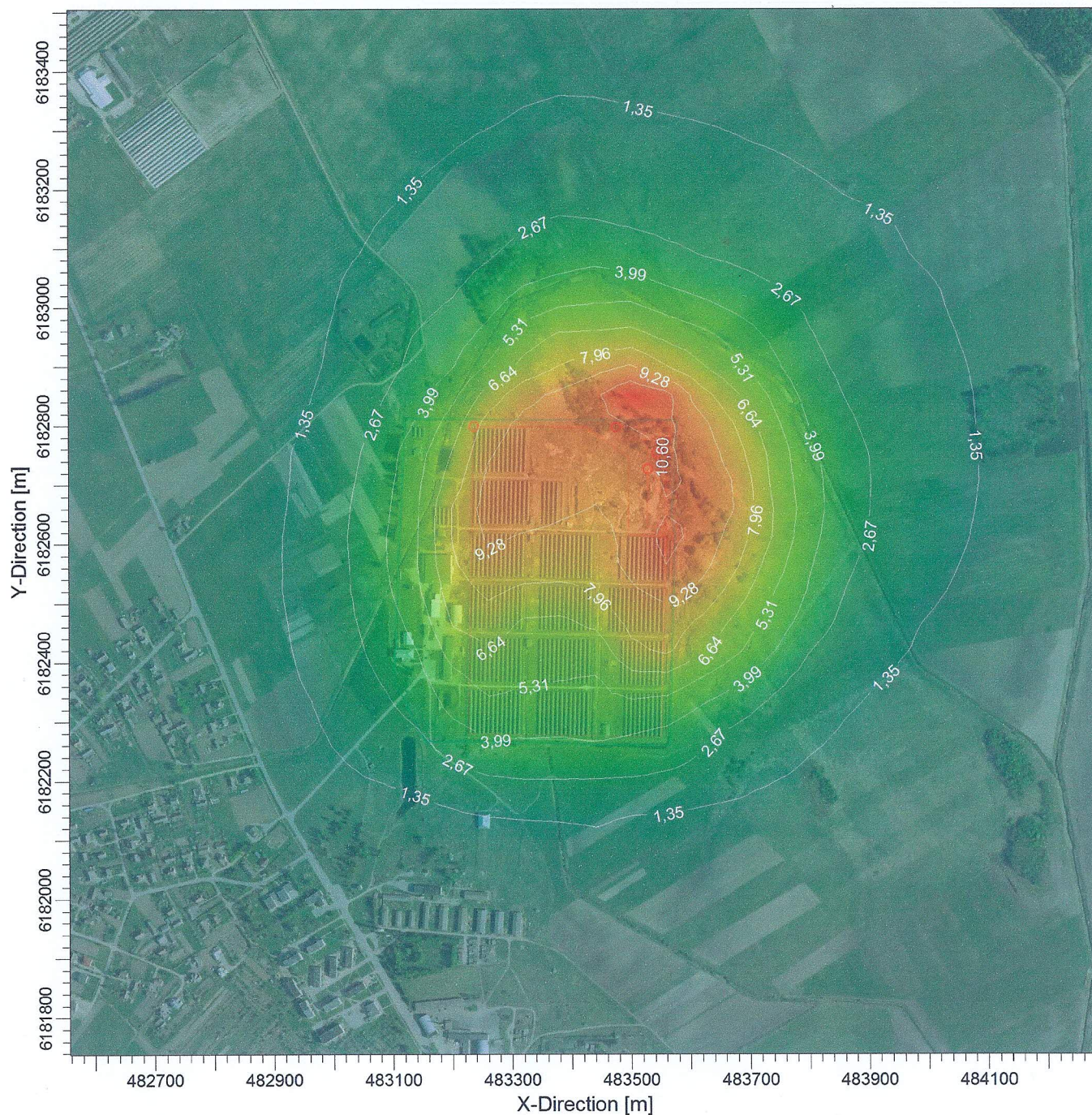
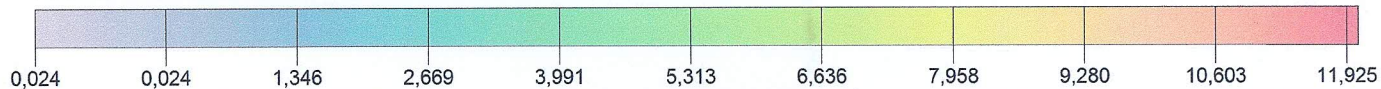


PROJECT TITLE:

Amoniakas (NH₃)**Vienos valandos vidurkio koncentracijos**

PLOT FILE OF 98.50TH PERCENTILE 1-HR VALUES FOR SOURCE GROUP: ALL

ug/m³

COMMENTS:

Ribinė vertė - 200 ug/m³

SOURCES:

4

COMPANY NAME:

RECEPTORS:

1600

MODELER:

OUTPUT TYPE:

Concentration

SCALE:

1:10.000

0

0,3 km

MAX:

11,92518 ug/m³

DATE:

2015.09.30

PROJECT NO.:

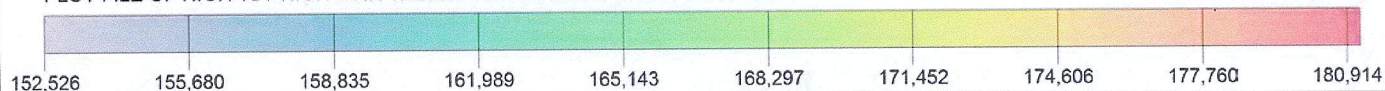
PROJECT TITLE:

Anglies monoksidas (CO)
8 valandų vidurkio koncentracijos



PLOT FILE OF HIGH 1ST HIGH 8-HR VALUES FOR SOURCE GROUP: SRCGP1

ug/m³



COMMENTS:

Ribinė vertė - 10000 ug/m³

SOURCES:

7

COMPANY NAME:

RECEPTORS:

1600

MODELER:

OUTPUT TYPE:

Concentration

SCALE:

1:10.000

0

0,3 km

MAX:

180,9144 ug/m³

DATE:

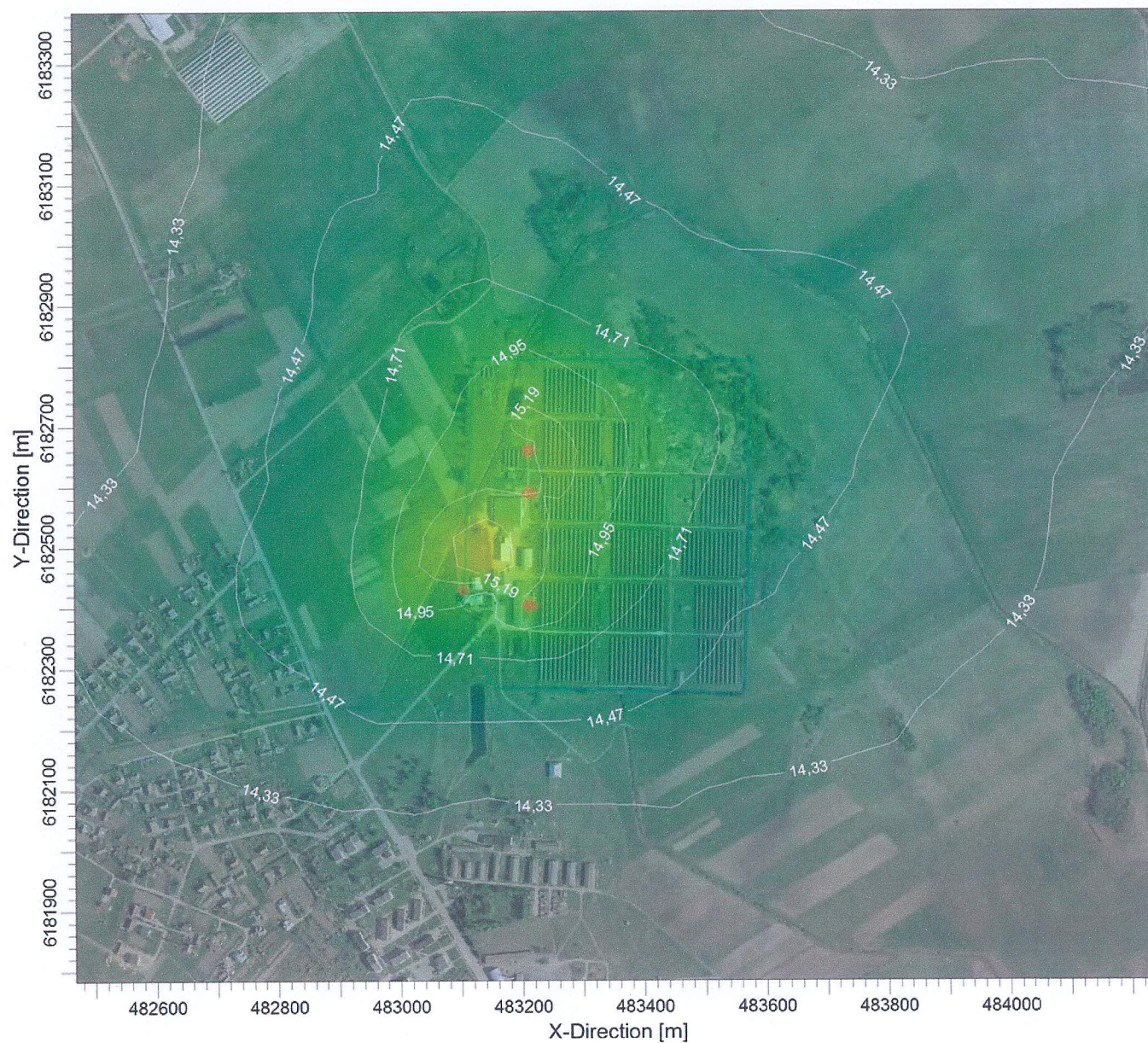
2015.07.28

PROJECT NO.:

PROJECT TITLE:

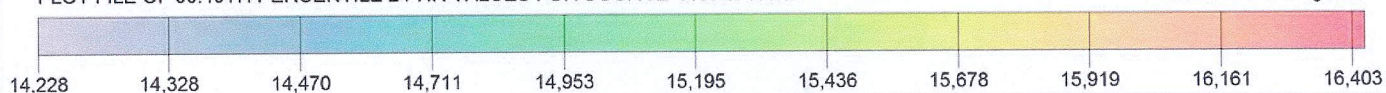
Kietosios dalelės (KD10)

Paros vidurkio koncentracijos įvertinus foninę taršą



PLOT FILE OF 90.40TH PERCENTILE 24-HR VALUES FOR SOURCE GROUP: ALL

ug/m³



COMMENTS:

Ribinė vertė - 50 ug/m³

SOURCES:

7

COMPANY NAME:

RECEPTORS:

1600

MODELER:

OUTPUT TYPE:

Concentration

SCALE:

1:10.000

0

0,3 km

MAX:

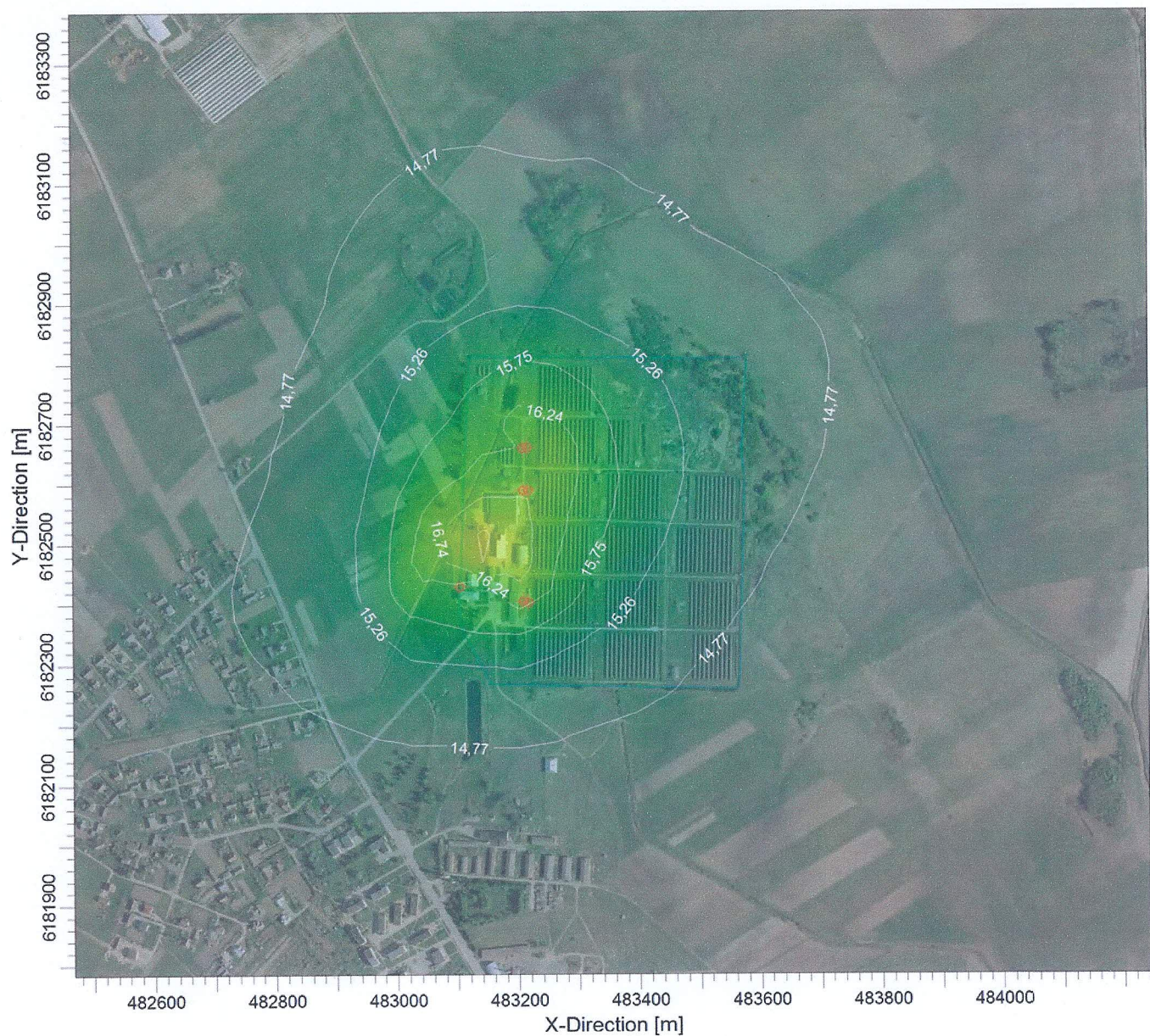
16,4026 ug/m³

DATE:

2015.07.28

PROJECT NO.:

PROJECT TITLE:
Kietosios dalelės (KD10)
Metų vidurkio koncentracijos įvertinus foninę taršą



PLOT FILE OF ANNUAL VALUES FOR SOURCE GROUP: ALL

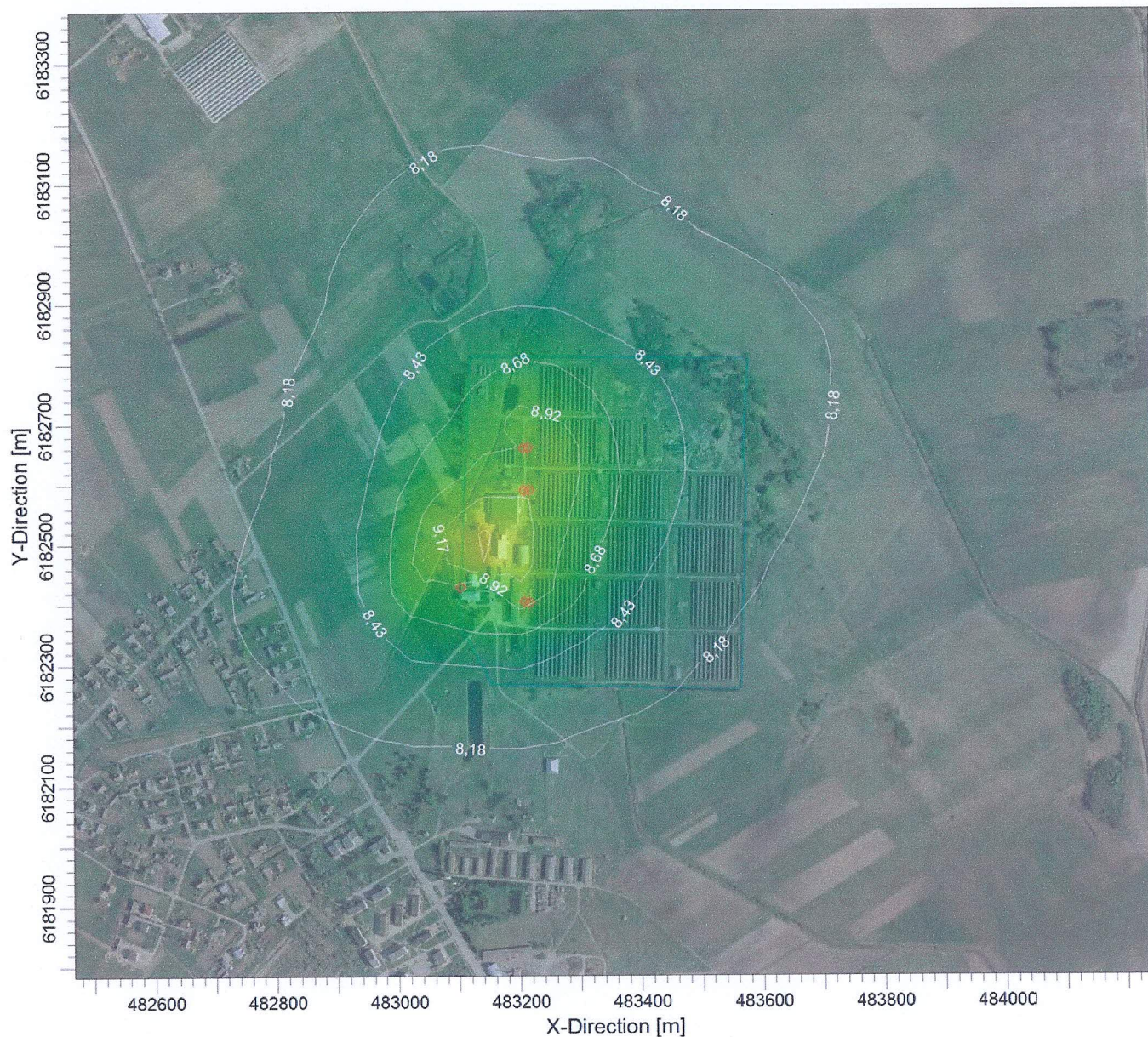
ug/m^3

14,277	14,769	15,261	15,753
16,245	16,737	17,229	17,721
18,213	18,705		
COMMENTS: Ribinė vertė - 40 ug/m3	SOURCES: 7	COMPANY NAME:	
	RECEPTORS: 1600	MODELER:	
	OUTPUT TYPE: Concentration	SCALE: 1:10.000 	
	MAX: 18,7045 ug/m^3	DATE: 2015.07.28	PROJECT NO.:

PROJECT TITLE:

Kietosios dalelės (KD2,5)

Metų vidurkio koncentracijos įvertinus foninę taršą



PLOT FILE OF ANNUAL VALUES FOR SOURCE GROUP: ALL

ug/m³



COMMENTS:

Ribinė vertė - 25 ug/m³

SOURCES:

7

COMPANY NAME:

RECEPTORS:

1600

MODELER:

OUTPUT TYPE:

Concentration

SCALE:

1:10.000

0 0,3 km

MAX:

10,1523 ug/m³

DATE:

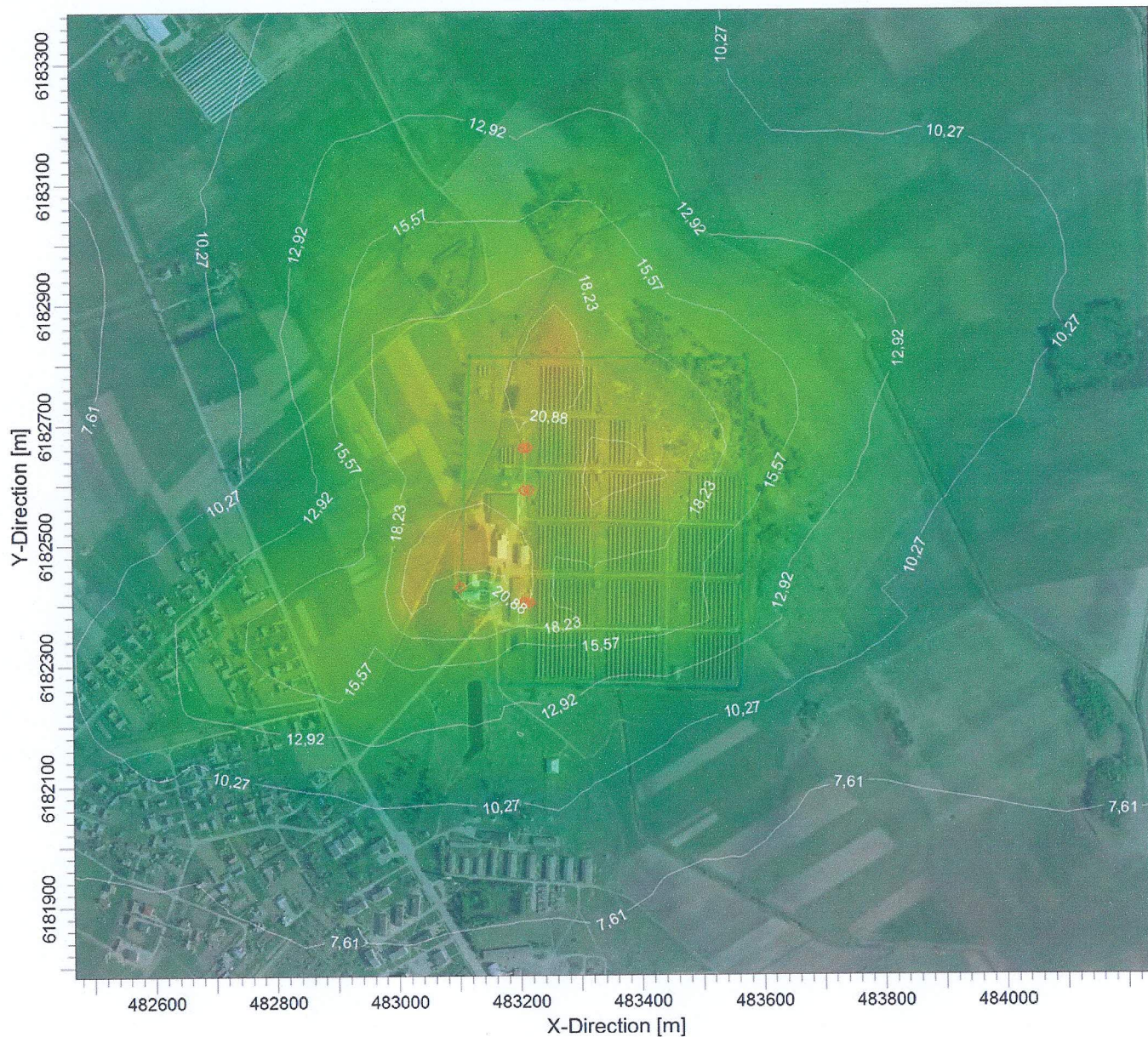
2015.07.28

PROJECT NO.:

PROJECT TITLE:

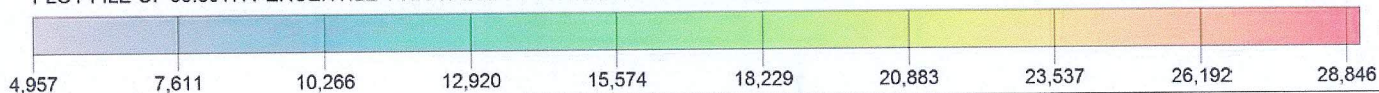
Azoto dioksidas (NO₂)

1 valandos vidurkio koncentracijos įvertinus foninę taršą



PLOT FILE OF 99.80TH PERCENTILE 1-HR VALUES FOR SOURCE GROUP: ALL

ug/m³



COMMENTS:

Ribinė vertė - 200 ug/m³

SOURCES:

7

COMPANY NAME:

RECEPTORS:

1600


MODELER:

OUTPUT TYPE:

Concentration

SCALE:

1:10.000

0  0,3 km

MAX:

28,8458 ug/m³

DATE:

2015.07.28

PROJECT NO.:

PROJECT TITLE:

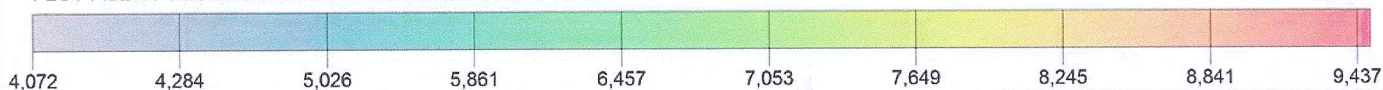
Azoto dioksidas (NO₂)

Metų vidurkio koncentracijos įvertinus foninę taršą



PLOT FILE OF ANNUAL VALUES FOR SOURCE GROUP: ALL

ug/m³



COMMENTS:

Ribinė vertė - 40 ug/m³

SOURCES:

7

COMPANY NAME:

RECEPTORS:

1600

MODELER:

OUTPUT TYPE:

Concentration

SCALE:

1:10.000

0

0,3 km

MAX:

9,4369 ug/m³

DATE:

2015.07.28

PROJECT NO.: